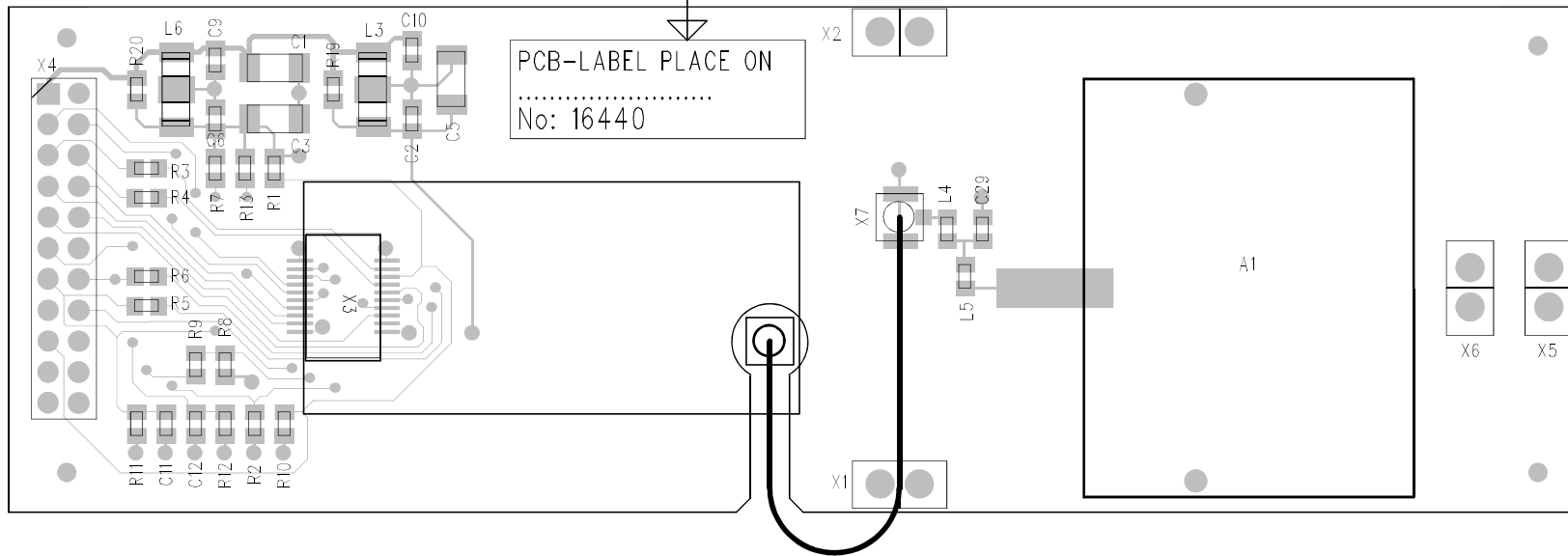
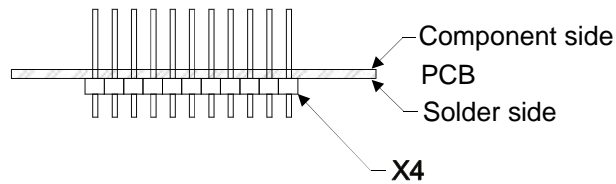


PLACE PCB LABEL ON PCB AS SHOWN



Note! X1, X2 and X4 are mounted from the solder side with longest part of the pins going trough the PCB.

Example: Mounting of X4 on the PCB



### APPENDED DOCUMENTS

	Rev	Files
<input checked="" type="checkbox"/> X-Y Coordinates	R1	18385R1_XY.XLS
<input type="checkbox"/> Testpoint / Testfixture		
<input type="checkbox"/>		
<input type="checkbox"/>		

	NAME:	AXIS 9010 ALPS-MODULE	PART No:	18385	REV:	R2
			DATE:	May 22, 2001	DES:	LR
			SHEET:	1 OF 1	APPR:	

This drawing contains confidential information and is the property of AXIS Communication AB, Lindå SWEDEN without whose permission it may not be copied, shown or handed to a third party or otherwise used, and it is to be returned promptly upon request to AXIS Communication AB