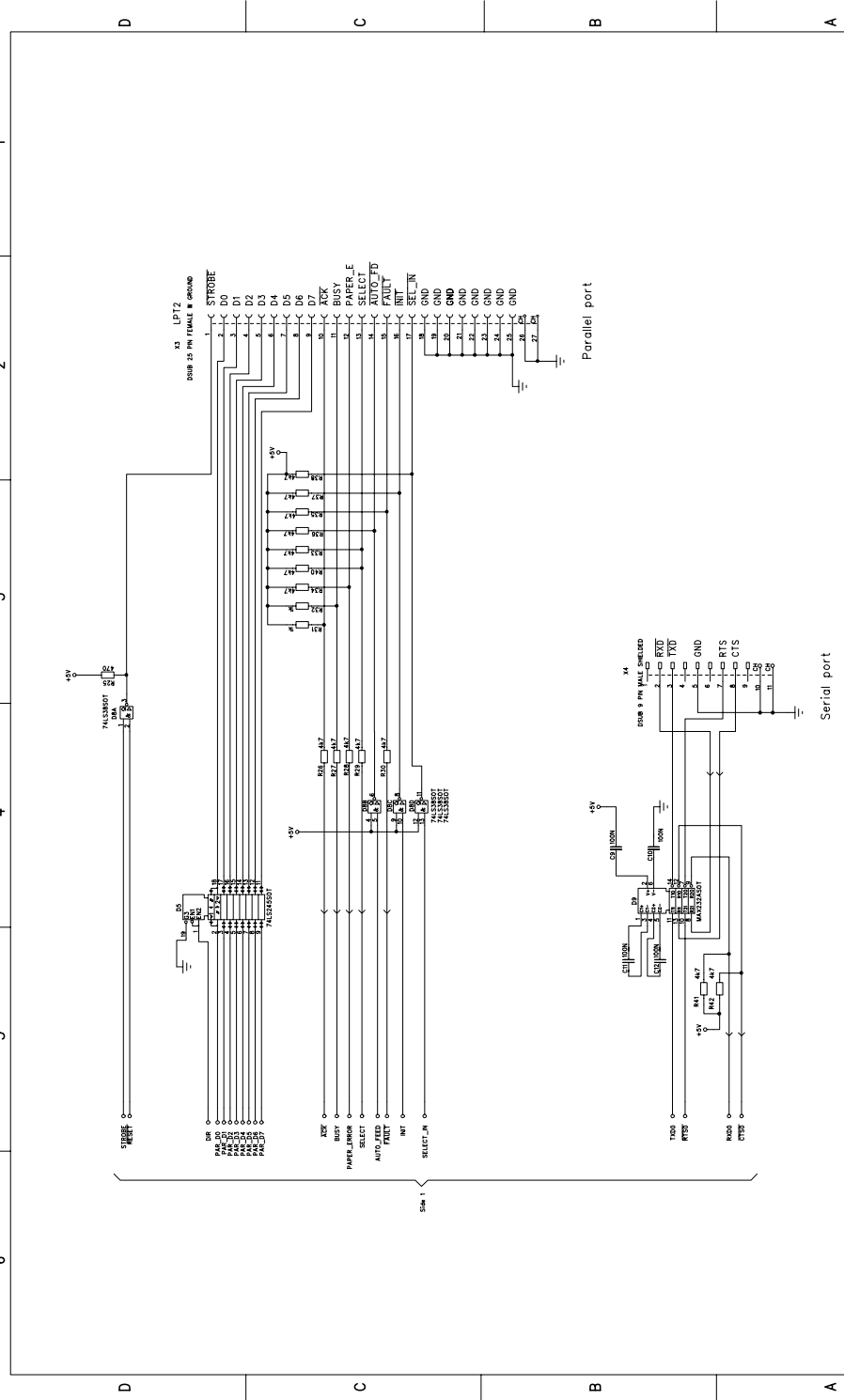

APPENDIX B EXAMPLES

Two examples of how to connect ETRAX 100 are given in this appendix.

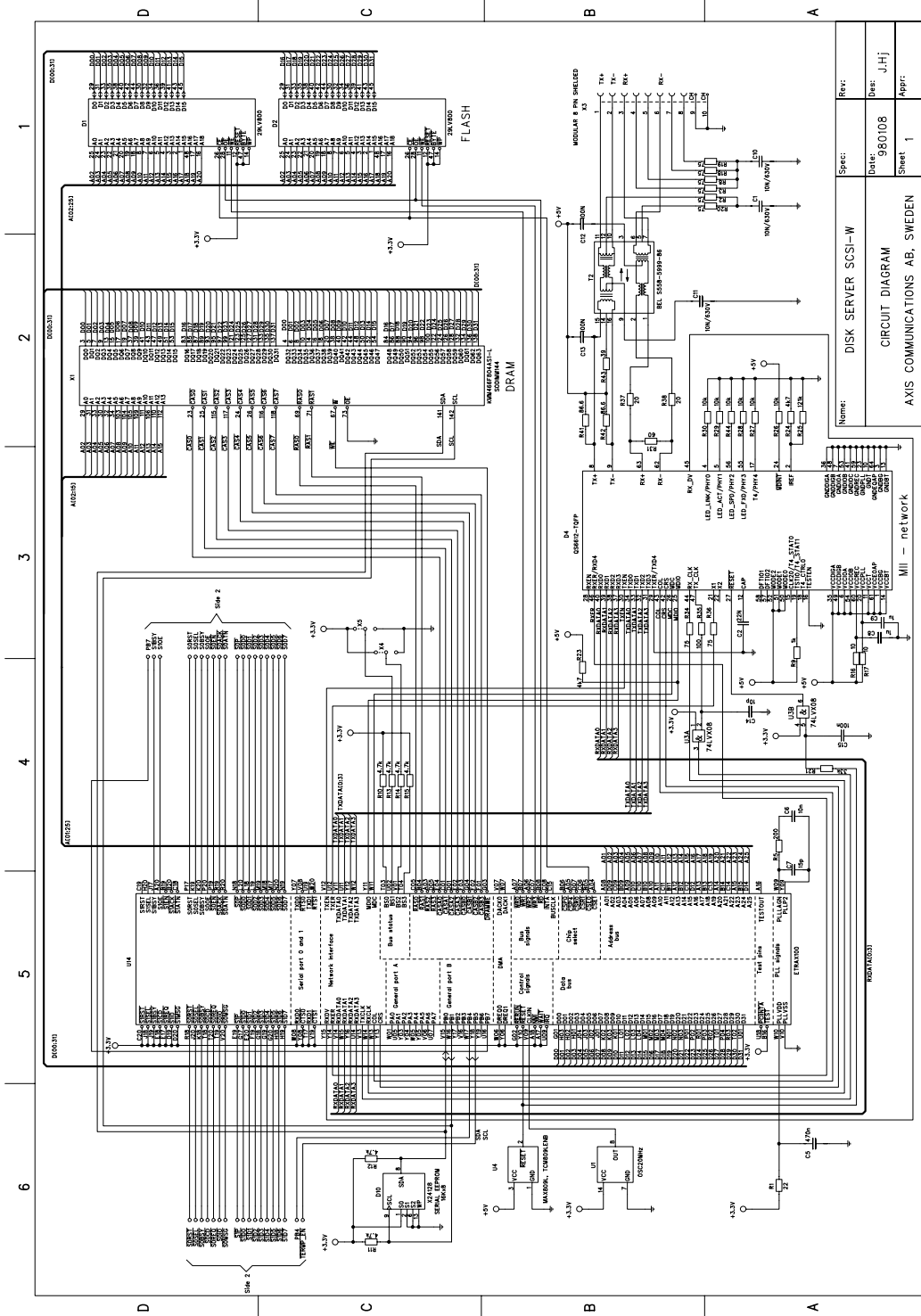
The first example shows a print server application with parallel port, serial port and SNI network connection. Please note that the circuit diagram covers two pages.

The second example shows a disk server application with SCSI connection. This circuit diagram also covers two pages.

1 2 3 4 5 6



Name: PRINT SERVER PARALLEL PORT		Spec:	Rev:
CIRCUIT DIAGRAM		Date: 980108	Des: J.Hj
AXIS COMMUNICATIONS AB, SWEDEN		Sheet 2	Appr:

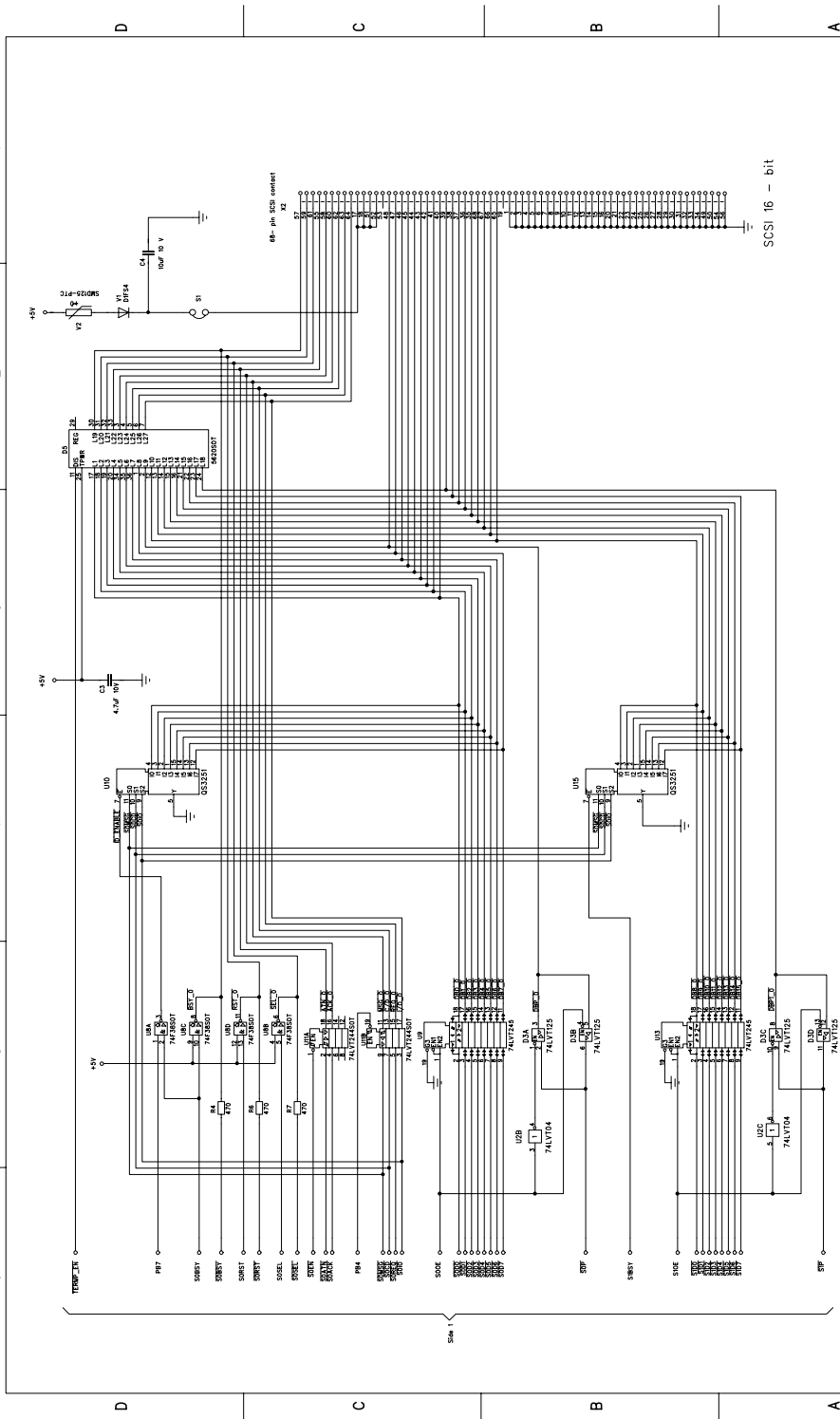


Rev:	Spec:
Date: 980108	DISK SERVER SCSI-W
Des: J.H.J	CIRCUIT DIAGRAM
Sheet 1	AXIS COMMUNICATIONS AB, SWEDEN
Appr:	

Notes: MII - network

Component labels include: DIMM, TR1920, SCSI controller, RAM, FLASH, and various control and power management components.

1 2 3 4 5 6



Name:	DISK SERVER SCSI-W		Spec:	Rev:
	CIRCUIT DIAGRAM		Date:	Des:
	AXIS COMMUNICATIONS AB, SWEDEN		980108	J.Hj
			Sheet	Appr:
			2	
